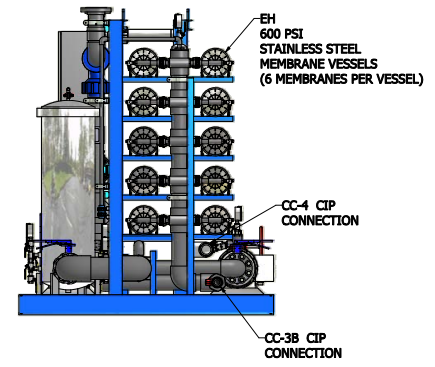
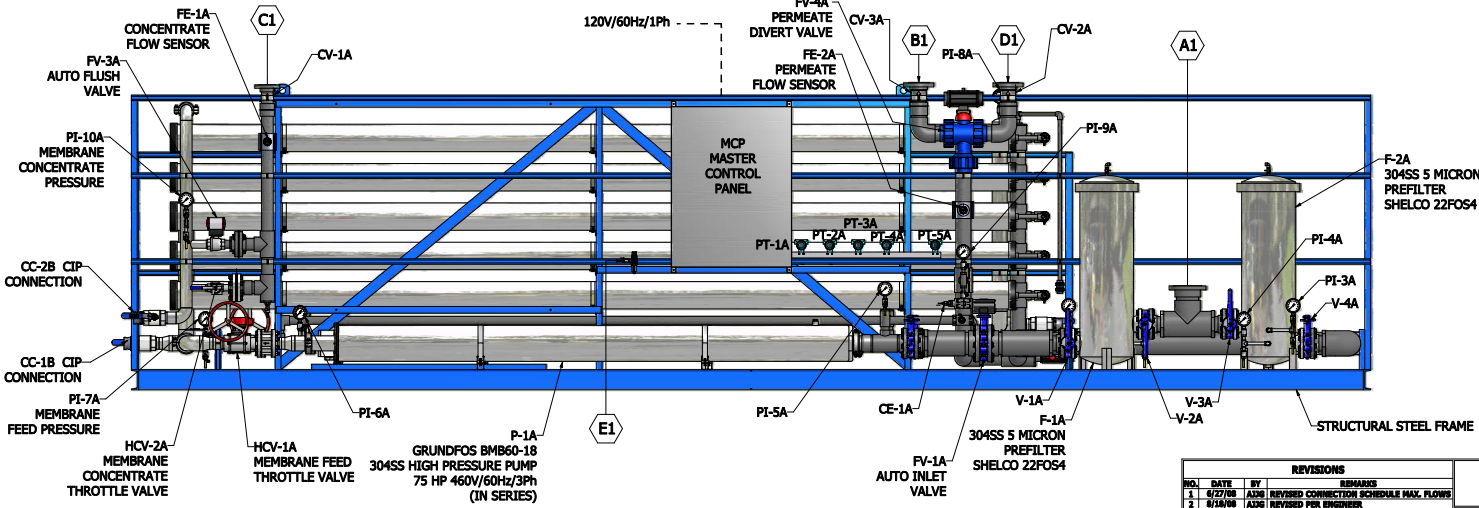
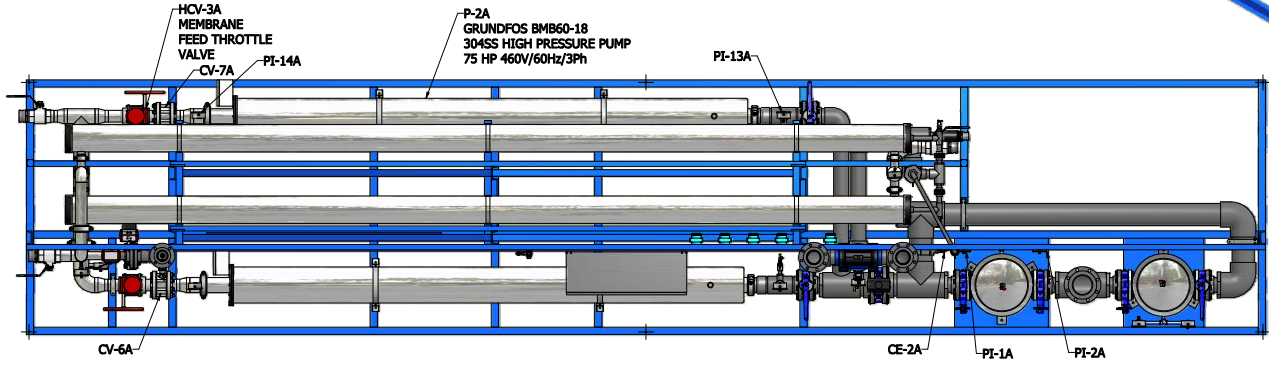
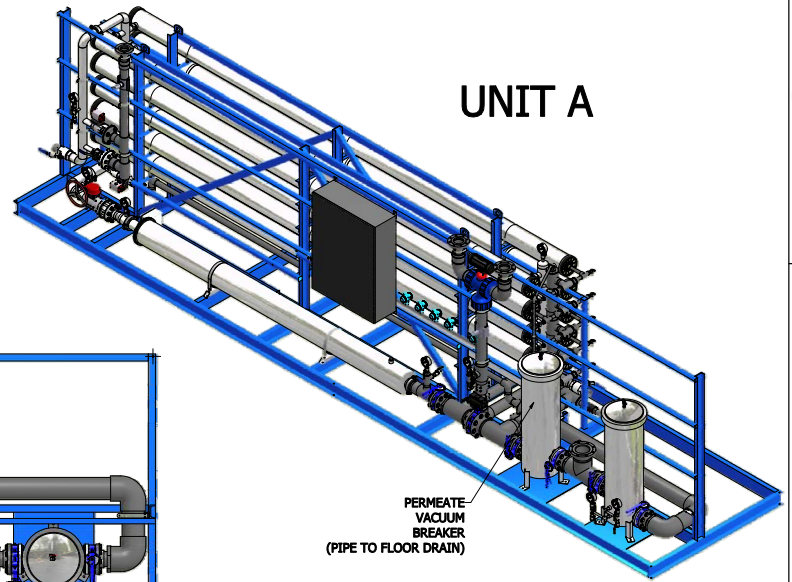


CONNECTION SCHEDULE						
ITEM	DESCRIPTION	LOCATION	MAX. FLOW	SIZE	CONNECTION	MATERIAL
A1	RAW WATER INLET	R.O. SKID	432 GPM	6"	150# FLANGE RF	PVC SCH 80
B1	PERMEATE OUTLET	R.O. SKID	250 GPM	4"	150# FLANGE RF	PVC SCH 80
C1	CONCENTRATE OUTLET	R.O. SKID	182 GPM	3"	150# FLANGE RF	PVC SCH 80
D1	LOW QUALITY PERMEATE OUTLET	R.O. SKID	250 GPM	4"	150# FLANGE RF	PVC SCH 80
E1	INSTRUMENT AIR 80 PSI	R.O. SKID	1 CFM	1/4"	FNPT	BRASS

**SYSTEM OPERATING PARAMETERS**

OPERATING PRESSURE: 40-450 PSIG  
 MINIMUM INLET PRESSURE: 30 PSIG  
 OPERATING TEMPERATURE RANGE: 33-85°F.  
 MAXIMUM INLET FREE CHLORINE: <0.1 PPM  
 MAXIMUM INLET SILT DENSITY INDEX (SDI): 3.0  
 NOMINAL SYSTEM RECOVERY RATE: 58-60%  
 NOMINAL SYSTEM TDS REJECTION: 95-99%  
 RO PUMP ELECTRICAL REQUIREMENTS: 460 VAC, 3-PHASE, 60 Hz.  
 CONTROL PANEL ELECTRICAL REQUIREMENTS: 120 VAC, 1-PHASE, 60 Hz.



REVISIONS			
NO.	DATE	BY	REMARKS
1	6/27/08	AGG	REVISED CONNECTION SCHEDULE MAX. FLOW
2	8/24/08	AGG	REVISED PER ENGINEER

NRO-360K-8H RO SYSTEM GENERAL ARRANGEMENT			
FIG. NO.	REV.	FILE NO.	SCALE
AGG			
DATE: 6/11/2008			HEET 1 OF 1